

S.NO.	DESCRIPTION	MMCA APPROVAL NO. AND DATE	REVISIONS	DATE	REMARKS
1.	CORE MOULDING SAND PLANT MELTING STOCK YARD BAY..	LR NO. 14330 U2 DRG NO. 52A/86/86 DT. 2.4.86	BAKAR 2/7/87	LR NO. 14330 U2 DRG NO. 52A/86/86 DT. 2.4.86	DEVIATIONS APPROVED BY MMCA UDS THEIR LETTER LR D DIS - C/9293/85 DT. 2.9.2.1986
2.	FETTLING SHOP.	LR NO. 14330 U2 DRG NO. 52A/86/86 DT. 2.4.86	- DO -	- DO -	- DO -
3.	ALUMINIUM DIECASTING DEPT.	LETTER LR D DIS C/1999/85 C/1999/85 DT. 19.6.85	ROC NO. 18984 DT. 2.4.86	LR NO. 14330 U2 DRG NO. 52A/86/86 DT. 2.4.86	- DO -
4.	SECURITY OFFICE	LETTER LR D DIS C/1999/85 C/1999/85 DT. 19.6.85	ROC NO. 18984 DT. 2.4.86	R DIS 1066/1024 DT. 19.6.85	- DO -
5.	TIRE OFFICE & BENCH BRIDGE	C/1999/85 DT. 19.6.85	ROC NO. 18984 DT. 2.4.86	R DIS 1066/1024 DT. 19.6.85	- DO -
6.	30" DIA WELL.	C/1999/85 DT. 19.6.85	ROC NO. 18984 DT. 2.4.86	R DIS 1066/1024 DT. 19.6.85	- DO -
7.	PUMP HOUSE	C/1999/85 DT. 19.6.85	ROC NO. 18984 DT. 2.4.86	R DIS 1066/1024 DT. 19.6.85	- DO -
8.	OVER HEAD WATER TANK.	C/1999/85 DT. 19.6.85	ROC NO. 18984 DT. 2.4.86	R DIS 1066/1024 DT. 19.6.85	- DO -
9.	FETTLING SHOP TOILET.	C/1999/85 DT. 19.6.85	ROC NO. 18984 DT. 2.4.86	R DIS 1066/1024 DT. 19.6.85	- DO -
10.	2 BAY EXTENSION ALUM DIE CASTING	- DO -	ROC NO. 18984 DT. 2.4.86	R DIS 1066/1024 DT. 19.6.85	- DO -
11.	33 KV SUBSTATION	- DO -	ROC NO. 18984 DT. 2.4.86	R DIS 3304/102 DT. 16.10.82	- DO -
12.	COMPRESSOR HOUSE	- DO -	ROC NO. 18984 DT. 2.4.86	R DIS 2504/102 DT. 16.10.82	- DO -
13.	EXTENSION TO CORE SHOP.	- DO -	ROC NO. 18984 DT. 2.4.86	R DIS 1066/1024 DT. 19.6.85	- DO -
14.	CORE SHOP TOILET	- DO -	ROC NO. 18984 DT. 2.4.86	R DIS 1066/1024 DT. 19.6.85	- DO -
15.	HOT & COLD WATER FURNACE	- DO -	ROC NO. 18984 DT. 2.4.86	R DIS 1066/1024 DT. 19.6.85	- DO -
16.	UNDER GROUND PUMP HOUSE AND C.H. TANK	- DO -	ROC NO. 18984 DT. 2.4.86	R DIS 1066/1024 DT. 19.6.85	- DO -
17.	SUB WAY	- DO -	ROC NO. 18984 DT. 2.4.86	R DIS 1066/1024 DT. 19.6.85	- DO -
18.	RECOILING PLANT	- DO -	ROC NO. 18984 DT. 2.4.86	R DIS 1066/1024 DT. 19.6.85	- DO -
19.	LEAN TO SHED FOR CORE SHOP	- DO -	ROC NO. 18984 DT. 2.4.86	R DIS 1066/1024 DT. 19.6.85	- DO -
20.	LEAN TO SHED FOR SAND PLANT	- DO -	ROC NO. 18984 DT. 2.4.86	R DIS 1066/1024 DT. 19.6.85	- DO -
21.	L.D.O TANK 20 KL	- DO -	ROC NO. 18984 DT. 2.4.86	R DIS 1066/1024 DT. 19.6.85	- DO -
22.	CYCLE SHED	- DO -	ROC NO. 18984 DT. 2.4.86	R DIS 1066/1024 DT. 19.6.85	- DO -
23.	COLLECTION WELL AND PUMP WELL	- DO -	ROC NO. 18984 DT. 2.4.86	R DIS 1066/1024 DT. 19.6.85	- DO -
24.	CODES CHARGER & PLATFORM	- DO -	ROC NO. 18984 DT. 2.4.86	R DIS 1066/1024 DT. 19.6.85	- DO -
25.	LEAN TO SHED FOR SAND PLANT	- DO -	ROC NO. 18984 DT. 2.4.86	R DIS 1066/1024 DT. 19.6.85	- DO -
26.	GENERATOR HOUSE	- DO -	ROC NO. 18984 DT. 2.4.86	R DIS 1066/1024 DT. 19.6.85	- DO -
27.	HT CAPACITOR ENCLOSURE	- DO -	ROC NO. 18984 DT. 2.4.86	R DIS 1066/1024 DT. 19.6.85	- DO -
28.	ANDROID SIG. STATION	- DO -	ROC NO. 18984 DT. 2.4.86	R DIS 1066/1024 DT. 19.6.85	- DO -
29.	ADC EXPANSION	- DO -	ROC NO. 18984 DT. 2.4.86	R DIS 1066/1024 DT. 19.6.85	- DO -
30.	GENERATOR AND COMPRESSOR SHED	- DO -	ROC NO. 18984 DT. 2.4.86	R DIS 1066/1024 DT. 19.6.85	- DO -
31.	TOILET BLOCK EXTENSION TO FETTLING SHOP	- DO -	ROC NO. 18984 DT. 2.4.86	R DIS 1066/1024 DT. 19.6.85	- DO -
32.	20 KL L.D.O TANK	- DO -	ROC NO. 18984 DT. 2.4.86	R DIS 1066/1024 DT. 19.6.85	- DO -
33.	STORES	- DO -	ROC NO. 18984 DT. 2.4.86	R DIS 1066/1024 DT. 19.6.85	- DO -
34.	SAND LABORATORY	- DO -	ROC NO. 18984 DT. 2.4.86	R DIS 1066/1024 DT. 19.6.85	- DO -
35.	LEAN TO SHED FOR SAND PLANT	- DO -	ROC NO. 18984 DT. 2.4.86	R DIS 1066/1024 DT. 19.6.85	- DO -
36.	EXTENSION TO SUBSTATION AT EAST LAND	- DO -	ROC NO. 18984 DT. 2.4.86	R DIS 1066/1024 DT. 19.6.85	- DO -
37.	PROPOSED EXTENSION TO 33KV SUBSTATION EAST LAND	- DO -	ROC NO. 18984 DT. 2.4.86	R DIS 1066/1024 DT. 19.6.85	- DO -

Note:

PROPOSED WORK SHOWN THUS

THIS CASE SUPERSEDES DRG NO. R/134/87

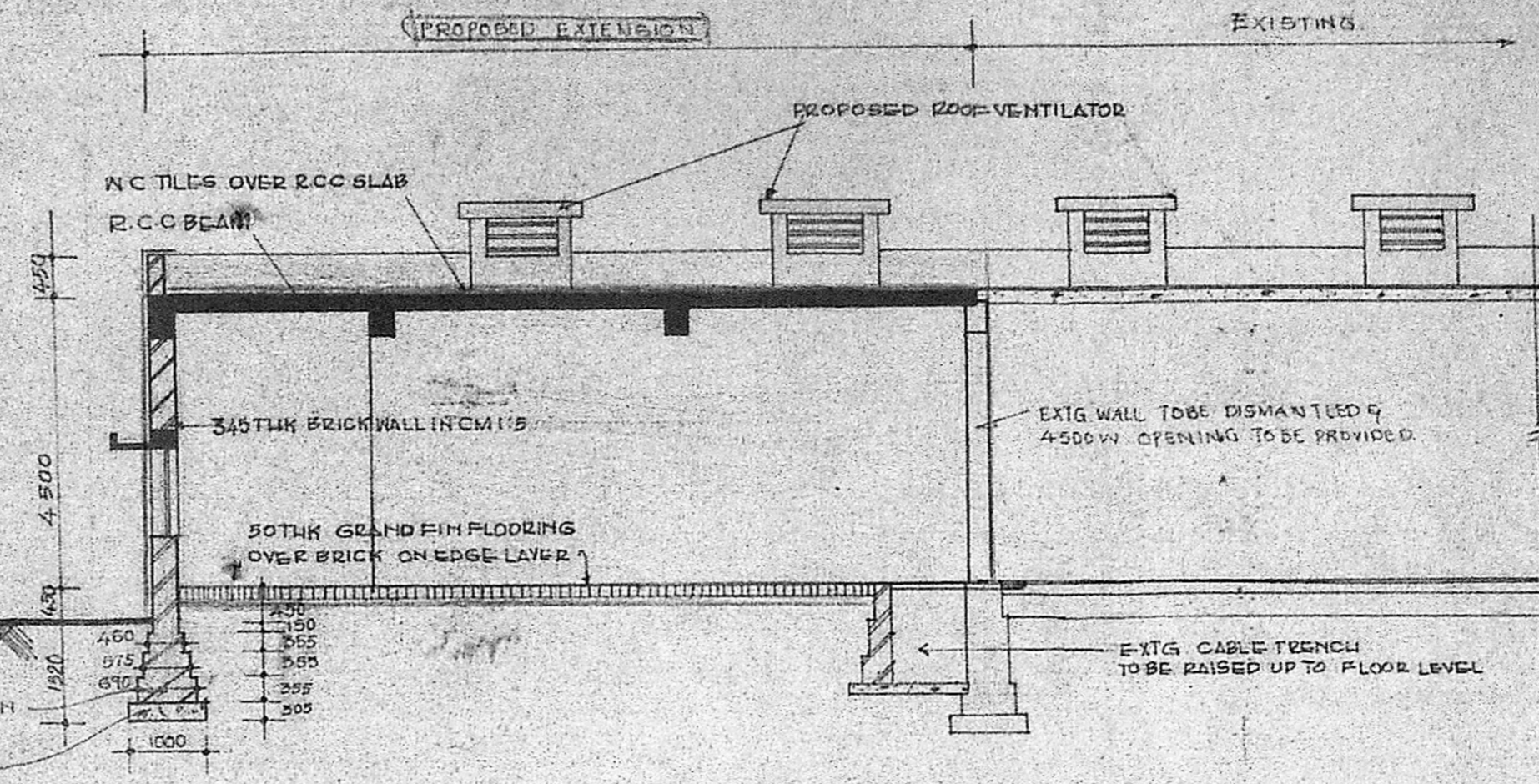
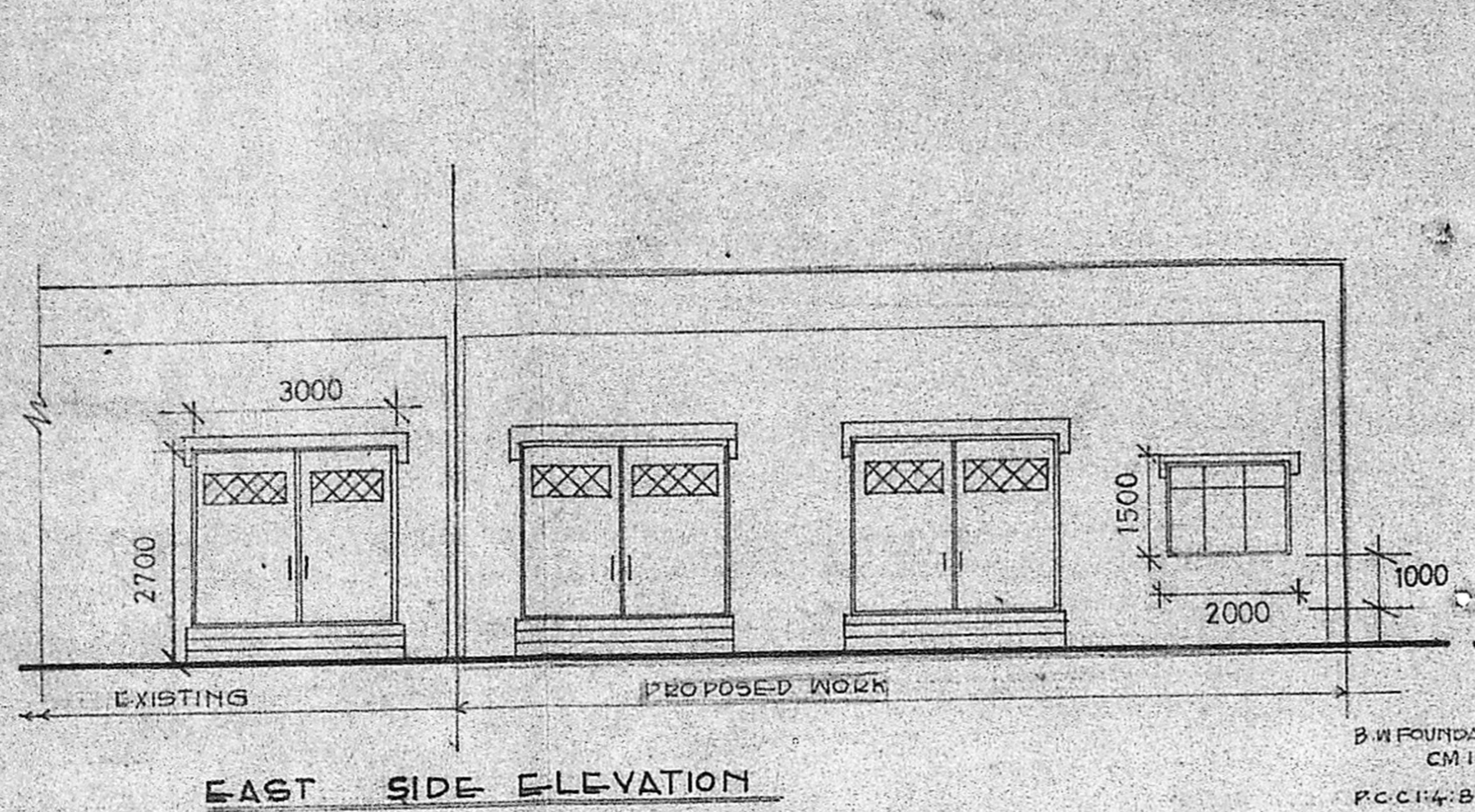
ENNORE FOUNDRIES LTD.
ENNORE, MADRAS-57.

EAST LAND LAYOUT

Scale: 1:400

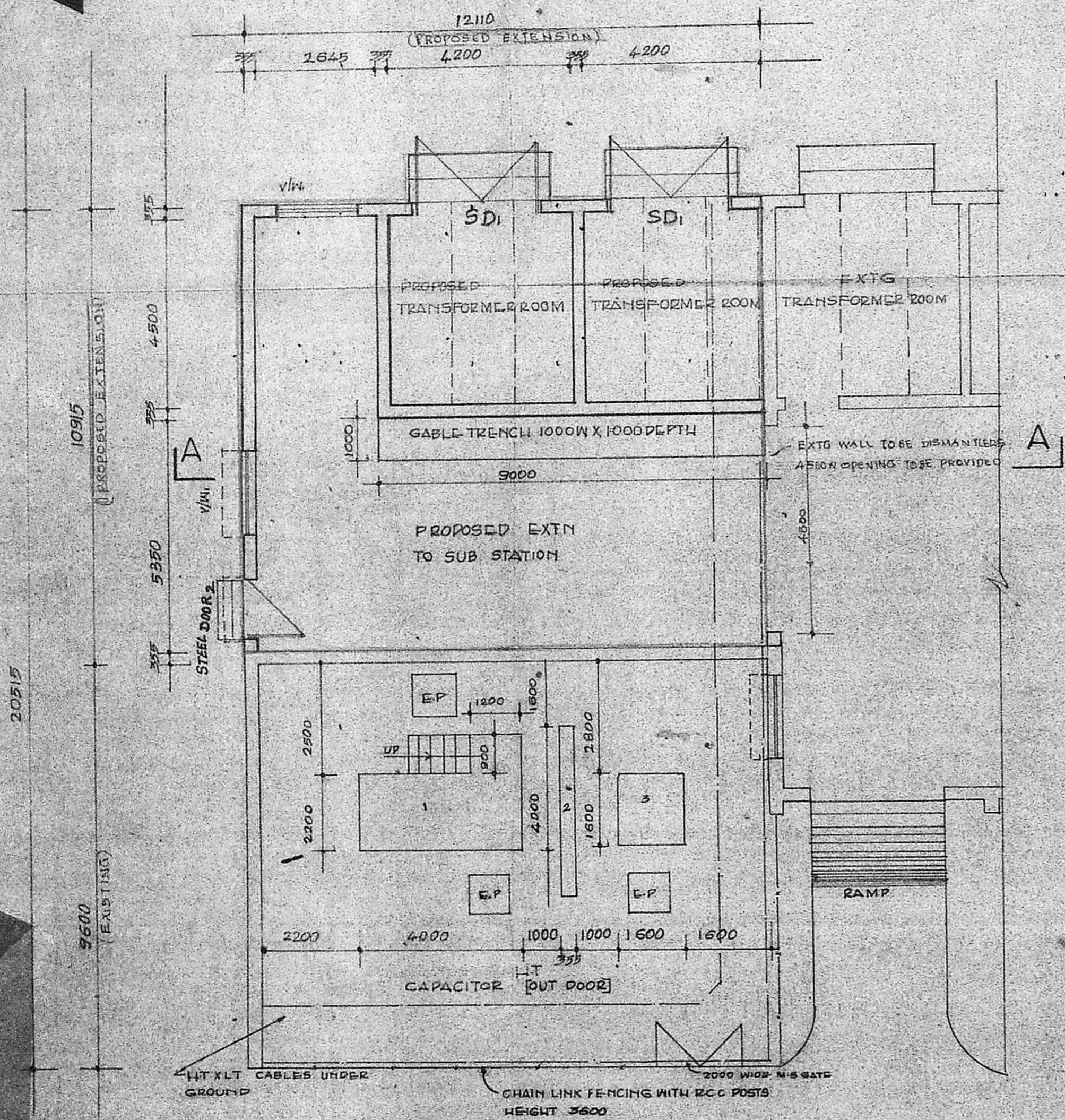
M/S C. NARAYANA RAO ARCHITECTS AND ENGINEERS, LTD. MADRAS 600002

DRG NO. AN/381



SECTION ON 'A A'

- VW — 2000 X 1500
- SD1 — 3000 X 2700
- SD2 — 900 X 2100



Planning Permit No. C.P.P./16 B/91
APPROVED
 SUBJECT TO THE CONDITIONS IN THE OFFICIAL TITR.
 No. C.2/647/90 date... 22.11.91.
 For MEMBER SECRETARY
 MADRAS METROPOLITAN
 DEVELOPMENT AUTHORITY
 MADRAS - 600 008.



For ENNORE FOUNDRIES LTD
 K. SHANMUGAM,
 General Manager,
 Projects & Plant Engg.
 JINNOJI RAO, L.C.E.
 Licensed Building Surveyor.
 Kathiwekkam Municipal Township
 Madras-600 057.

ENNORE FOUNDRIES LTD.
 MADRAS - 600057
 PROPOSED EXTENSION TO EXISTING
 SUB STATION 33/11KV IN EAST LAND

PLAN, SECTION, ELEVATION &
 SITE PLAN

SCALE: 1:100 DATE: _____
 DRAWN: D.GANESH CHECKED: _____

M/S C.R. NARAYANA RAO,
 ARCHITECTS AND ENGINEERS
 LUZ - MADRAS - 600004.

B.TECH (HONS) M.S.(LL) PWD ASSOC. NAM SOC. CE
 FILE NO. KLSP ARCHITECT

DRG NO. GR/3260/87